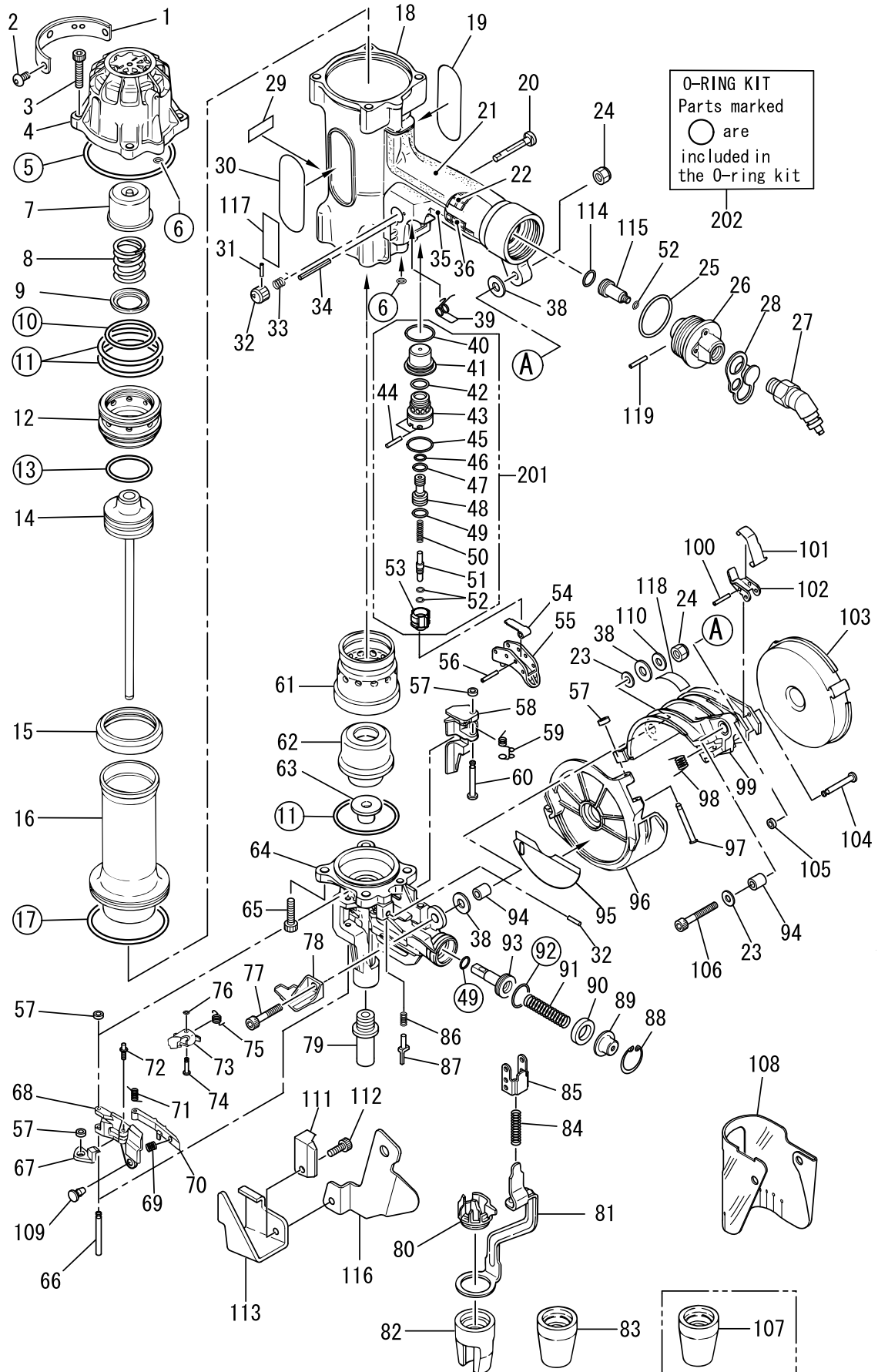


HN120



POS.	Art.-Nr.	Description	COMMENT
1	HN10325	Exhaust Cover	
2	BB41701	Special Screw M6x8	
3	BB40227	Bolt 6x35	
4	HN70427	Cylinder Cap	WAS=HN70095
5	HH14040	O-Ring ARP568-040	
6	HH11120	O-Ring ARP568	
7	HN10275	Piston Stop	
8	KK23516	Comp. Spring 3516	
9	CN31892	Spring Sheet	
10	HH19708	O-Ring 1AP2.6x39.5	
11	HH11157	O-Ring ARP568-136	
12	HN10274	Head Valve	
13	HH11803	O-Ring P36	
14	HN10279	Main Piston	
15	HN10278	Cylinder Seal	
16	HN10276	Cylinder A	
17	HH12108	O-Ring 1AG65	
18	HN81025	Frame (repl. HN10271)	
19	HN10755	Caution Label	
20	CN34088	Trigger Lock Lever	
21	HN10310	Grip Cover A	
22	HN10322	Buffer Seat A	
23	EE31105	Plain Washer 1-6	
24	CC00402	Elastic Stop Nut M6x1	
25	HH12118	O-Ring 1AG35	
26	HS10802	End Cap	WAS=HN10313
27	HN70264	Air Plug H-FPM	
28	HN10316	End Plug Cap	
30	HN10756	Label HN120	
31	FF21201	Pin 2,5x10	
32	HN10327	Trigger Lock Dial	
33	KK23507	Compression Spring 3507	
34	FF21235	Roll Pin 3x30	
35	HN10311	Grip Cover B	
36	HN10323	Buffer Seat B	
38	HH21002	Seal	
39	KK33189	Torsion Spring 3189	
40	HH11159	O-Ring ARP568-016	
41	HN10326	Trigger Valve Cage	
42	HH11151	O-Ring ARP568-013	
43	HN10283	Trigger Valve Housing	
44	FF30161	Straight Pin 161	
45	HH11138	O-Ring 1AP20	
46	HH11119	O-Ring 1AP6	
47	HH11802	O-Ring P7	
48	CN33627	Pilot Valve (seq.trip)	
49	HH11113	O-Ring 1AP9	
50	KK23129	Compression Spring 3129	
51	HN10328	Trigger Valve Stem	

52	HH11901	O-Ring1.4x2.5	
53	HN10284	Trigger Valve Cap	
54	HN10286	Contact Lever	
55	HN81029	Trigger	
56	FF22402	Spring Pin 3x16	
57	EE39625	Rubber Washer7/repEE39621	WAS = EE39602
58	HN10300	Feed Pawl	
59	KK33190	Spring 3190	
60	FF41598	Pin 1598	
61	HN10277	Cylinder B	
62	HN10282	Bumper	
63	HN10296	Driver Guide	
64	HN10294	Nose	
65	BB40444	Screw M8x30	
66	FF31261	Pin 1261	
67	HN10302	Door Plate	
68	HN10301	Door	
69	KK23376	Comp. Spring 3376	
70	CT10191	Switch Bar	
71	KK33090	Torsion Spring 3090	
72	FF42214	Step Pin 2214	
73	HN10303	Door Lever	
74	FF41528	Step Pin 1528	
75	KK33197	Spring 3197	
76	CT10226	Lever Hold Rubber	
77	BB40457	Screw M6x38	
78	HN10309	Nail Guide	
79	HN10297	Nose Tip	
80	HN10213	Feed Finger	
81	HN10289	Contact Arm	
82	HN10292	Contact Tip A	
83	HN10293	Contact Tip B	
84	KK23256	Compression Spring 3256	
85	HN10287	Arm Guide	
86	KK24072	Compression Spring 4072	
87	HN10304	Door lever	
88	JJ22408	Retaining Ring C24	
89	HN10299	Spring Collar	
90	CN31755	Feed Piston Stop	
91	KK23517	Compression Spring 3517	
92	HH11106	O-Ring AP16	
93	HN10298	Feed Piston	
94	FF51613	Hollow Pin 1613	
95	HN12401	Warning Label	WAS=HN10754
96	HN10732	Magazine Cap	
97	FF41281	Step Pin 1281	
98	KK33218	Spring 3218	
99	HN10731	Magazine Holder	
100	FF21101	V.S. Pin 3x12	
101	HN10308	Magazine Hook	

102	HN10737	Magazine Lock (repl. CT10218)	
103	HN10736	Magazine (repl. HN10305)	
104	FF41599	Step Pin 1599	
105	EE39609	Rubber Washer 1.8x6x2	
106	BB71504	Screw 6x35	
107	HN10330	Attachement C Unit	
108	HN10211	Dust Cover	
109	CN31083	Dust Cover Hook	
110	CN32170	COLLAR	WAS = CN30707
111	HN10501	Guide Holder	
112	BB40436	Hex. Bolt 6x14	
113	HN12396	Nail Nose Guide (WAS HN10502)	
114	HH11132	O-Ring 1AP10A	
115	HN10752	End Cap Stem	
116	HN10753	Nail Nose Guide B	
117	HN10757	Trigger Lock	
118	HN10758	Label B	DISCONTINUED
119	FF21229	Roll Pin 3x20	
201	HN81032	Trigger Valve Kit	
202	HN81033	O-Ring Set	
	HN10329	BELT HOOK FOR HN120	